



EMERALD EYE SERIES  
LED HIGH BAY

Emerald EYE LED High Bays are purpose built for Australian environments.

Lightweight and easy to handle, they merge premium LED technology with reliability and practicality for a superior, lasting lighting result.

FEATURES

- Lightweight (3.9kg), easy to handle
- Ultra slimline profile
- Ceiling or wall mountable (15°, 40°, 65° & 90° rotatable arm)
- Spring lock hook for easy, secure installation
- All cardboard packaging for easy recycling
- Long lifetime >70,000 hours
- 5 year warranty
- Suited to ambient temperatures of -20° to 60°
- Vapour valve for use in refrigerated environments
- Meanwell driver
- Optional dimming motion & light sensor
- IP rating: 65
- Shatterproof diffuser
- Approved in all state based energy efficiency programs

VEET Approved VIC	ESS Approved NSW	EEIS Approved ACT	REES Approved SA	SAA	NATA
-------------------------	------------------------	-------------------------	------------------------	-----	------

[sales@emeraldplanet.com.au](mailto:sales@emeraldplanet.com.au) [www.emeraldplanet.com.au](http://www.emeraldplanet.com.au)



### CLEVER DESIGN

The Emerald EYE has been designed to be compact, lightweight and easy to install.

#### SPRING LOCK HOOK

Fast, simple, secure attachment.

#### LIGHTWEIGHT & COMPACT

Slimline design and just 3.9kg in weight means simple transportation.

Foam-free, cardboard-only packaging to reduce waste bulk.



#### EASY-GRIP MOUNTING BRACKET

Simple to hold during installation.

#### EXTERNAL DRIVER MOUNTING

Delivers better heat dissipation and longer driver lifetime.

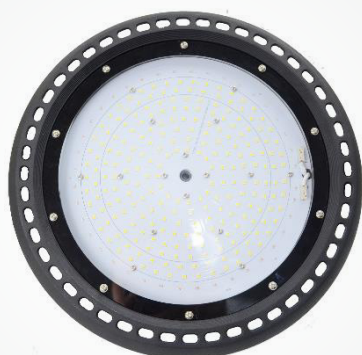


#### MULTI-ANGLE MOUNTING BRACKET

Multi-angle rotatable arm for either ceiling suspension or wall mounting.

#### VAPOUR VALVE

Allows use of the luminaire in refrigerated areas.





MADE FOR AUSTRALIAN  
ENVIRONMENTS

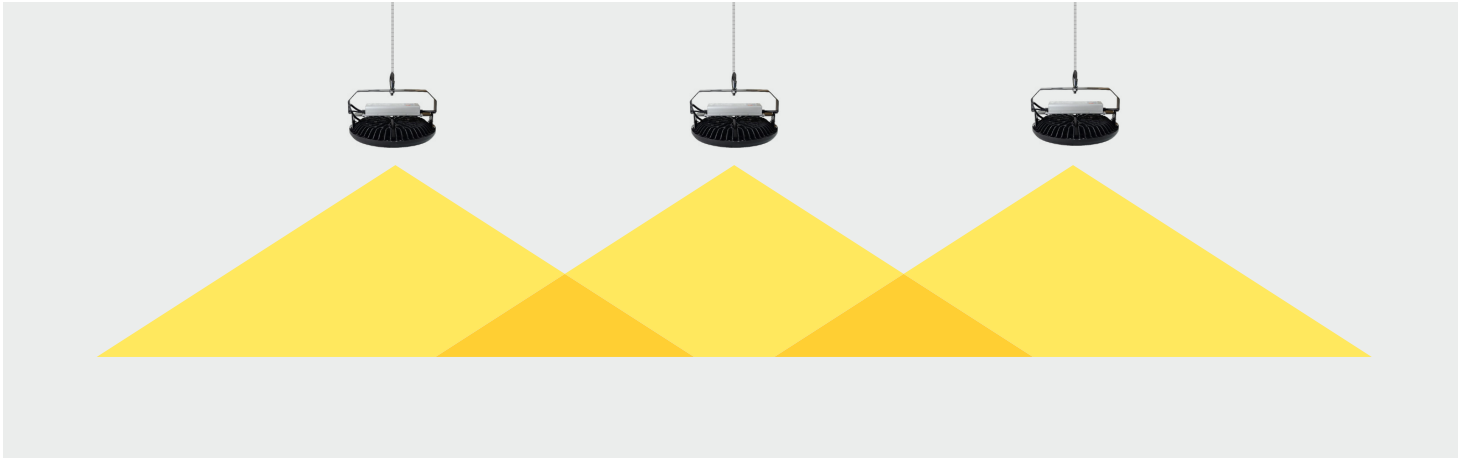
Rated to operate in ambient temperatures from -20°C to 60°C, you can be assured of reliability even on the hottest summer days.

POWERED BY MEANWELL

- Reliable and efficient
- Premium driver with 5 year warranty
- Latest version ELG series
- Driver lifetime >100kh
- Maximum airflow to reduce operating temperature and increase longevity
- Rated for ambient temperatures of -20°C to 60°C
- Highly Efficient >150lm/W
- 110° beam angle
- Long lifetime >70,000 hours
- High performance meanwell driver
- 5 year warranty

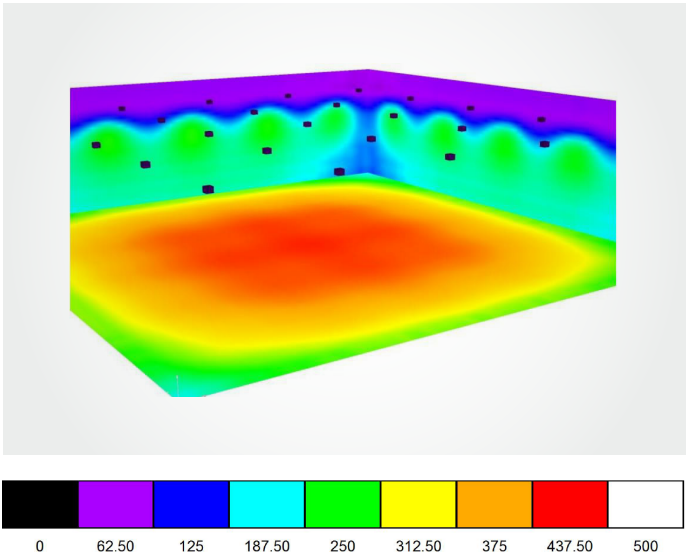
CHARACTERISTICS

MODEL	PART CODE	LCP	LUMENS	EFFICACY
55W	EP-LHB-50	54.18W	8,246	152lm/W
70W	EP-LHB-70	67.02W	10,221	153lm/W
85W	EP-LHB-90	86.63W	13,185	152lm/W
100W	EP-LHB-100	100.30W	15,155	151lm/W
115W	EP-LHB-110	116.00W	17,435	150lm/W
130W	EP-LHB-130	133.40W	20,464	153lm/W
155W	EP-LHB-150	155.80W	23,417	150lm/W



OPTIMAL LIGHT DISTRIBUTION

The Emerald EYE’s 110° beam angle and ultra efficient 150lm/W output gives even light distribution with more visibility in high places and no darkpatches on the floor.



Based on Dialuxmodelling, the 85W Emerald EYE demonstrates bright, even light on the floor, as well as high up on the walls.

Example based on 8m ceiling height, 6m luminaire spacing.

AVERAGE LUX GUIDE

Ceiling Height	Model Number						
	55W	70W	85W	100W	115W	130W	155W
4m	239 lx	331 lx	429 lx	461 lx	514 lx	622 lx	701 lx
6m	218 lx	302 lx	392 lx	423 lx	469 lx	567 lx	649 lx
8m	200 lx	276 lx	358 lx	387 lx	429 lx	518 lx	585 lx
10m	183 lx	253 lx	329 lx	355 lx	394 lx	476 lx	536 lx
12m	168 lx	233 lx	302 lx	326 lx	362 lx	438 lx	494 lx

Approximate average lux at 0.8m from the ground, based on 6m luminaire spacing, 30m x 30m unfurnished warehouse space.

Typical warehouses require minimum 160 lux, depending on specific AS/NZS 1680 requirements for the site.